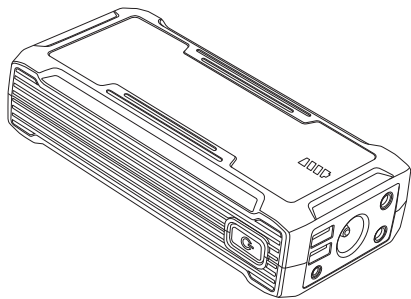


Portable multi-function jump starter

User manual



Read this manual carefully before using

Thanks for choosing the multi-function jump starter. Please read this manual carefully before using and keep it for review.

This manual helps you to operate device correctly, But it is not the introduction of the soft & hard ware configuration. Any configuration of products, Please refer to the related contract or consult with your distributor. The images in this manual are for reference only, Thank you!

Safety and maintainance

Please follow the notice as below and read the user manual carefully

- ★ Please do not open this unit. Opening may break or damage components, and will avoid the warranty.
- ★ Please do not place the product in high-intensity magnetic field in order to avoid the damage parts of components that may cause the product can't work normally.
- ★ This is not water-proof products, please do not place it in wet conditions. In order to avoid heat, smoking, deformation, damage even exploding for battery which is caused by short-circuit, please do not place the product into water.
- ★ Do not allow children to use this unit.
- ★ Please fix the product when you keep it in your auto trunk.
- ★ Please recharge the product every 6 month at least though you don't use it at all , If you can recharge it every 3 month, it is much better for battery life .
- ★ Please do not throw device into fire in order to avoid exploding.

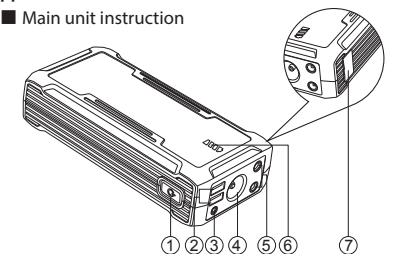
- ★ Please do not recharge this unit with nonstandard AC adater in case that the unit is damaged.
- ★ Please deal with the dead product as rules, do not throw it away as normal rubbish in order to avoid exploding or contamination.

Attention

- ★ This unit contains a lithium polymer battery. It is only use as emergency power but it can not instead of car battery. Always comply with transport and safety regulations in the use and disposal of such batteries.
- ★ When using the Jump Start function, do not allow the positive and negative poles to contact each other. This may cause sparking and result in a safety hazard, and cause a short circuit of the unit.
- ★ When the car battery voltage is less than 3V, the Smart Boost cable will disable the Jump Start function.
- ★ Please operate the product in the temperature of -20°C to 60°C.

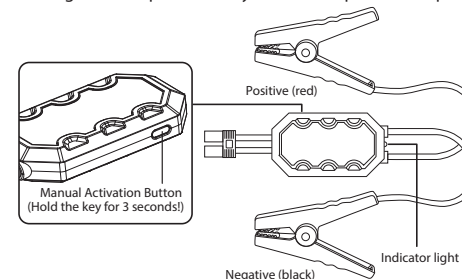
Appearance instruction

■ Main unit instruction

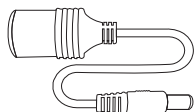


- ① NO/OFF button
- ② USB output
- ③ DC15V input
- ④ 1W LED light
- ⑤ DC12~16V output
- ⑥ Battery indicator
- ⑦ EC5 output/Dust cover

■ Large current protection system— Jump start clamps

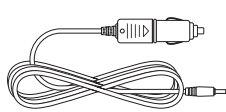


■ Cigarette light adapter

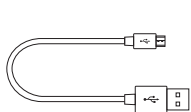


Can be connected to car electronics (12V/15A)

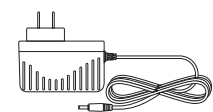
■ Car charger



■ USB wire



■ AC adapter



▲ Picture is only reference, please regards the products as its reality

Battery Indicator

Press the POWER key to turn ON the unit. The BATTERY CAPACITY indicator will be lighted up. If no device is connected to the unit it will be turned off automatically. Depress POWER key for 3 seconds to fully turn off the unit.

Light mode

Please press "G" button for 3 seconds to turn on the LED light and press "G" button again for 3 seconds to turn off the LED light and USB 5V output. In the light mode, press "G" button shortly for exchange among illumination, SOS, flash light and turn off mode.

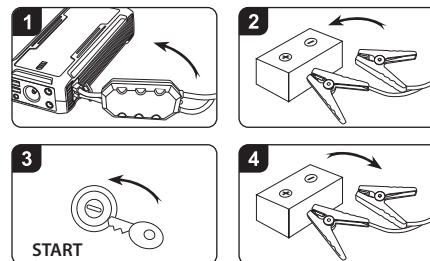
How To Jump Start Your Vehicle

This unit is designed for jump starting all kinds of 12V vehicle batteries. If the vehicle does not start immediately, Please wait for 1 minute to allow device to cool down. Do not try to restart the vehicle after three consecutive attempts as this may damage the unit. Check your vehicle for other possible reasons why it will not restart.

1. Connect the Smart Boost cable to the EC5 Port on the unit.
2. Connect the red battery clip to the battery positive pole (+) and the black clip to the negative battery pole (-).
 - Green light FLASHING on the Smart Boost cable - Jump Start unit is on standby status.
 - Green light CONSTANT - a valid connection exists between the unit and the battery, and the car can be started.
 - Red light FLASHING – Jump Start battery capacity is low, and needs to be charged.
 - Red light CONSTANT – Output has been cut due to (a) Short circuit, (b) Over current, (c) Over temperature, (d) Over voltage and / or (e) Reverse connection. Disconnect Smart Boost cable from unit and battery to reset.
3. Turn your ignition key to start engine. Please implement this action within 1 minute. Otherwise the Smart Boost cable will cut output automatically, and booster cable will need to be reset.
4. Once the engine has started, Please disconnect the Smart Boost cable from the unit immediately, and remove the clips from the battery.



- While the green indicator light is on – the jump starter is active – do not disconnect the battery clamps from the battery to avoid electric shock.
- Once engine has started FIRST remove the smart booster cable from the unit. THEN remove clips from the car battery.



Please note carefully:

- Make sure that the unit is NOT connected to the car battery before using the MANUAL ACTIVATION function.
- Ensure that the clips are connected to the correct battery poles as the reverse polarity protection is DISABLED.

How To Recharge This Unit

This unit can be charged using standard 15V/1A AC adapter

- Do not attempt to charge the unit using both methods at the same time. This will damage the unit.
- Product comes with cigarette light adapter. The maxi output current is 15A, it can support to power all of 12V car electronics
- When recharging using AC power, only use the 15V AC adaptor supplied with this unit.

Using the 15V AC adaptor, it will take approximately 5 hours to fully charge the unit. In order to extend the battery life, it is recommended to fully charge the unit every 3–6 months. Once the unit is fully charged, or is not under load, it will enter an auto sleeping mode to save power. However, we recommend to turn off the unit when it is not in use.

Technics

Capacity (mAh)	16800mAh
Peak ampere	800A
USB output	5V/2.1A 5V/1A
DC output	12V~16V/15A
Input voltage (V)	15V/1A
Charging time (H)	DC15V: ~5H
LED light power	White: 1W
Main unit N.W.(g)	580g
Work temperature	-20°C — 60°C
Size (mm)	178x84x45 (LxWxH)